



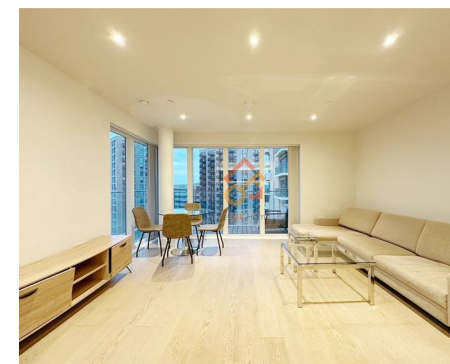
Let **UK** Home

**2 Bedrooms**

**Flat**

Located in London

**£2,550 Per Month**



[info@letukhome.co.uk](mailto:info@letukhome.co.uk)

<https://www.letukhome.co.uk/>

01795 358 886



# 11 Pegler Square London

SE3 9FW



Let UK Home are excited to offer this spectacular two bedroom apartment in the heart of Marsden House part of the Kidbrooke Village.

This property comprises a large bright open plan kitchen and living room leading to a large private balcony with great views, two double bedrooms with fitted wardrobes, a large family sized bathroom and ample storage.

Residents will benefit from a concierge and onsite fitness facilities including communal courtyard , gym and fitness studios.

There is a rail station Kidbrooke in this development, which can quickly reach London Bridge, Waterloo and other downtown transportation hubs. It is also very convenient to drive to Greenwich University and Goldsmiths College. There are famous attractions and large green spaces near the development, such as the Greenwich Royal Observatory, Greenwich Park, the British National Maritime Museum, and the Prime Meridian.

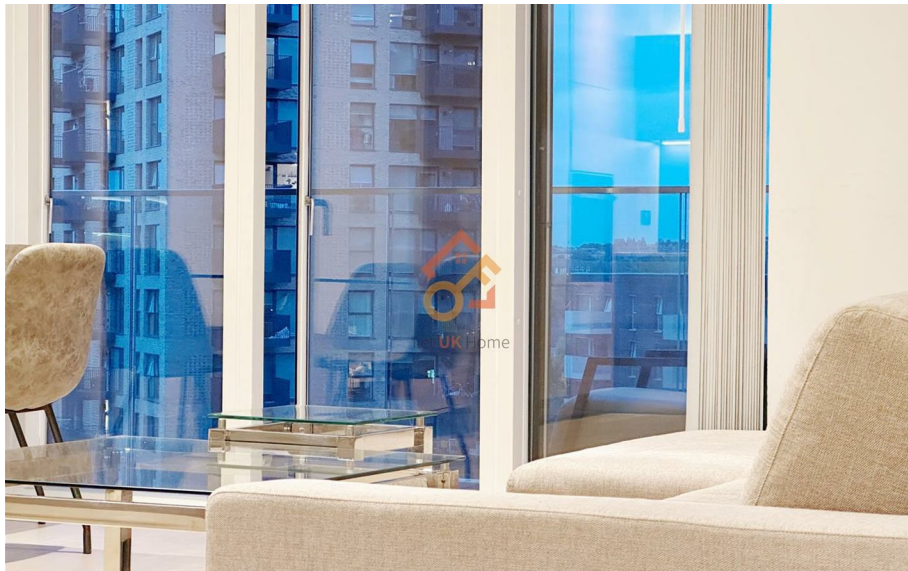
# 11 Pegler Square London

£2,550 Per Month



- 9th Floor
- 24h Security
- The Gym
- Greenwich Park
- Kidbrooke Station

- Concierge Service
- Communal Courtyard
- Greenwich
- Greenwich Royal Observatory
- EPC Rating: B



# THE SQUARE

TWO BEDROOM

3rd - 9th & 11th Floors

Total Area:	64.8 SQ M	698 SQ FT
Living/Dining/Kitchen	5733mm x 4843mm	18' 10" x 15' 11"
Bedroom 1	3831mm x 3200mm	12' 7" x 10' 6"
Bedroom 2	4390mm x 2750mm	14' 5" x 9' 0"
Balcony	9.22 sq m	99 sq ft
Balcony*	10.56 sq m	114 sq ft



Let **UK** Home

3F 2 Eastbourne Terrace

Paddington

London

W2 6LG

01795 358 886

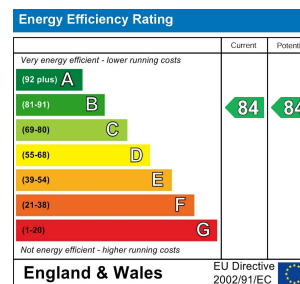
info@letukhome.co.uk



**Council Tax Band: D**

**Local Authority:**

Agents Note: Whilst every care has been taken to prepare these particulars, they are for guidance purposes only. All measurements are approximate and are for general guidance purposes only and whilst every care has been taken to ensure their accuracy, they should not be relied upon and potential buyers/tenants are advised to recheck the measurements.



<https://www.letukhome.co.uk/>